

Comparative Study

Jessica Sankey



Vincent Van Gogh
Starry Night



Salvador Dali
Melting Watch



Karen Williams Bursubardis
Foliage Particulates 4

This Comparative Study focuses on techniques the artists use to show emotions and style in their art works. The international artists in this Comparative Study are Vincent Van Gogh, and Salvador Dali, these artists were used for inspiration for many of my artworks. Another local artist; Karen Williams Bursubardis, was included as one of my inspirations. This will also be about comparing and contrasting how each artist uses art techniques also the use of color showing emotions meaning the darker the colors the darker the meaning, the brighter the color the happier the meaning

Evaluation of Cultural Significance of Vincent Van Gogh

Van Gogh was a Dutch Post-Impressionist painter. He was considered the greatest painter after Rembrandt. He started this trend of Post-Impressionist art and the use of color and the way the art looks real. Meaning he wants his art to look like it is a window looking out to that specific item he painted. After he fell in love with the English culture. His career started when he moved to Paris. Van Gogh met Pissarro, Monet and Gauguin, soon after he met them he decided to imitate their techniques. Meaning he picked up and what painting style they had and how they were able to capture what they wanted in a piece. When Van Gogh relocated to Paris, he interested himself in the world of Impressionism and Post-Impressionist. Van Gogh was able to pick up brighter and more vibrant colors. Van Gogh was able to paint with vibrant colors like yellows and white, that would catch a person's eye. He also used brighter colors like blues and greens.



Starry Night



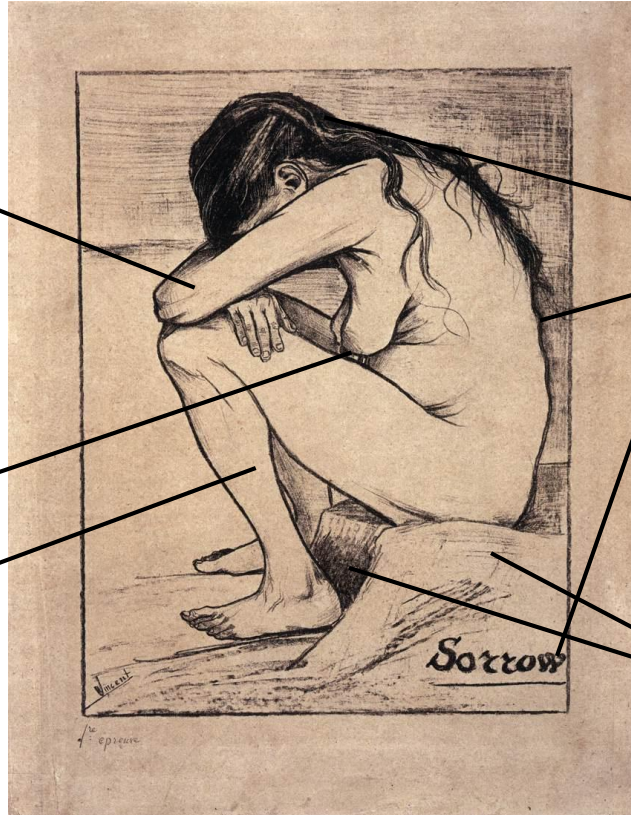
Irises

Interpretation of Function and Purpose

Sorrow by Vincent Van Gogh

Her arms crossed by her head shows that she has been crying or she is hiding from the pain of what she lost.

The image of her being naked shows that something has happened to her. The meaning behind the piece is of her losing her health due to a venereal disease and money. The women lost her money when her health went down. Van Gogh wanted to capture this emotion.



The line *Sorrow* represents what the piece is about. Showing that she is upset about losing her health and money.

The way she is hunched over shows that she is hurting because of what she lost.

The dark colors give people a sense of depression and sadness due to the way the two dark colors flow together.

Interpretation of Function and Purpose

Wheatfield with crows by Vincent Van Gogh

Use of emotion shows how the wind is blowing to make the wheat move. He wanted to add motion to show that pieces and look real if you add the idea of movement.



The painting can give someone an emotion by just looking at the piece. The piece can make someone feel like they are traveling alone and lost. Also freedom because of the openness.

The use of dark colors shows night time and a contrast from the wheat to show they are not on idea for painting. He used the night/dark colors to show a sense of lost. Due to the way the dark colors make the sky look dark and rainy.

Analysis of Formal Qualities of Van Gogh

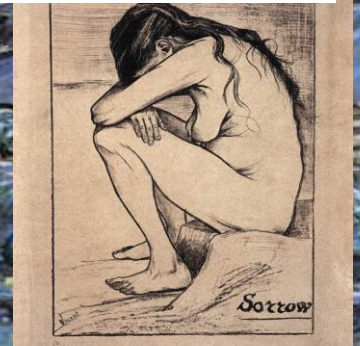
Van Gogh's use of his emotional and spiritual state. His emotional state is lost and he doesn't know where to go. He is "losing his mind" and doesn't know what to do about it because no one is there to help him. Along with his spiritual state of knowing who he is and what he can do in life, meaning he knows what is wrong or right but with him he is starting to lose what he knows because of him being so secluded. The artworks show that he takes his work seriously and he puts himself into the work. His use of dark and bright colors in his work, bring it to life, he makes his work sick out because of the way he used colors meaning he wanted to capture people attention when they look at a piece. His ability to use own experiences of being in an asylum and going through heartbreaks and issues with people not being supportive of his work and what he wants to do in life. His color techniques of dark vs light and his ways of using motion to create his artwork. His ideas and positions help us understand what type of artist and painter he is because he uses his own ideas and creates a meaningful piece.



Wheat Fields
Oil
50.5 x 103.0
July, 1890



Sorrow
Graphic
Nov. 11,
1882



Evaluation of Cultural Significance of Salvador Dali

Salvador Dali was a Surrealist artist. He was born on May 11th, 1904. Dali studied art in 19ss but was shortly suspended from the drawing academy. While he was in school he explored many forms of art. He explored modern paintings also Metaphysics and Cubism. He studied and followed painters like Raphael, Bronzion and Diego Velazquez. Dali's art experiments led to his first Surrealist period in 1929. His first painting's were oil based. The "unreal dream" was what Dali was inspired by. The "unreal dream" is mainly what people dream about but he adds his own twist to it showing that this isn't what the person dreamed.



The Eye
Oil
1945



Melting Watch
Oil
1954

Interpretation of Function and Purpose

Melting Watch by Salvador Dali

Melting Watch
Oil
1954

The use of shadows create a background and effect show that this piece is meant to pop out and grab a person's attention.



Flowing of the paint and shapes show which ways the clock is going. This use of movement helps people see the way the clock is leaving as it finishes melting.

This piece and show multiple meanings and show people that everyone has their own meaning to a piece.

The choice of color shows where the clock stands and what is happening around it. The effect helps create a sense of how dreams can slow up time and how dreams tend to fade away after awhile.

Analysis of Formal Qualities of Salvador Dali

Dali mainly used deformed/melted object to show the meaning and idea for the pieces. Dali wants to use deformed/melted object to create a dream like effect. Dali looks at everything like a painting and adds his twist to it which is the deformed/melting objects. In his pieces he uses bright and neutral colors to show a person's dreams and what colors would be in someone's dream. He also used bright and neutral colors to create an idea that they are in someone's dreams. Dali uses his paintbrush like he is printing an image off of a computer. His paintings would look so well blended and no paint would be bubbled up. Dali also uses clean and precise lines to make sure what he wanted to create looked like the real thing.



Persistence of Memory
Oil
1931



Melting Watch
Oil
1954

Evaluation of Cultural Significance of Karen William-Brusubardis

Williams-Brusubardis started art as a kid and was called “The Art Kid.” She drew anything that came to mind and whatever she noticed either outside or in a store that she was drawn too. Her family didn’t think that was a bad thing neither did she. Williams-Brusubardis decided after high school to move to Milwaukee and study art at The Milwaukee Institute of Art and Design. Williams-Brusubardis had many inspirations for going into art like, Richard Diebenkorn, Peter Dog, Gustav Klimt, Chuck Close, and many more. Williams-Brusubardis is inspired by those artists because of their use of colors and the way they can make any colors turn into a work of art. Meaning they can use the darkest and less used color and turn it into a work that people want to see.



Foliage Particulates #2
Acrylic
24” x 36”



Mountain Pines
Acrylic
24” x 30”

Interpretation of Function and Purpose

Foliage Particulates 4 by Karen Williams-Brusubardis

Use of dark and light colors show where the difference of the ground, the trees, and the sky start and end.



Artists wants to show a path where people can walk by using a lighter color green than on the other sides. She wants to show that the piece is inspired by what she was looking at. What she seen that captured her attention.

Multiple colors in one spot show the way the artist wanted to create the image and capture people's attention. The way the colors form together.

Can create multiple meanings for this piece. She wanted people to come up with their own meanings besides what she had planned for the piece to represent.

Analysis of Formal Qualities of Williams-Bursubardis

Williams-Bursubardis wants people to enjoy her work and feel a sense of home and warmth. She wanted to show off the way she paints and many people like the idea of nature she has. She wants people to be able to see how she works and why she uses those techniques for her pieces. Williams-Bursubardis's moods and feelings towards the pieces influence the way her art turns out and what she wants to call it. Her mental experiences that happened when she grew up and what she seen around her during her life, were able to shape the way she makes her pieces. Williams-Bursubardis will not talk about her mental experiences. She also likes to use her own memory and her imagination when she creates work because for her it helps make her pieces come to life and look more like her work. Williams-Bursubardis also uses unusual color combinations and abstract shapes while creating her work. She combines blues with greens and reds.



Mountain Pines
Acrylic
24" x 30"

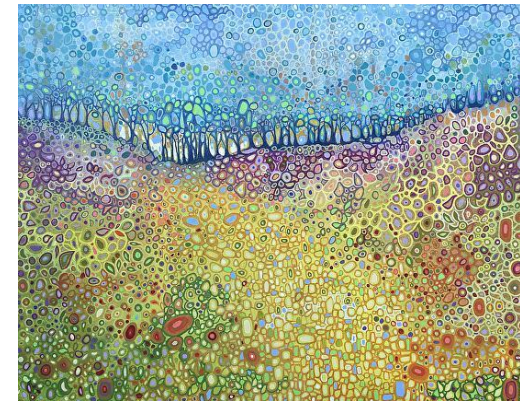


*Foliage
Particulates #2*
Acrylic
24" x 36"

Comparing Use of Emotion



- Van Gogh and Williams-Brusubardis use bright and dark colors to show feelings of happy and sad. The use of the colors show people what idea they are trying to get across of being depressed or sad.
- Dali and Van Gogh's use of movement to capture the idea behind the piece. Both use movement to capture how they wanted people to see the piece and what they were trying to get across by the meaning.
- Use of bright and vibrant colors to make the work pop more. All artists use bright and vibrant colors to make people attracted to their work and make certain pieces stand out more.
- The color blue is commonly used to show a background color or feeling. They can use blue to show a meaning of sad or lonely.



Contrasting Use of Emotion

- Pieces are more deep and have a darker meaning than what we see.
- Darker colors are more depressing and mad.
- Blues and blacks are more depressed/ mad.
- Other colors try to fight the darker meanings.



- Pieces are more over the top and all over the place, with the way the objects are deformed or odd looking.
- Random colors are more mixed emotions and confusing.
- Deformed and odd shapes make a dream like effect.



- Pieces seem more calm and more relaxing with the use of colors.
- Lighter colors are more happy and calming. Also create a emotion of happy.
- Bright colors cause attention and make the piece the center of attention.



Comparing Artistic Styles

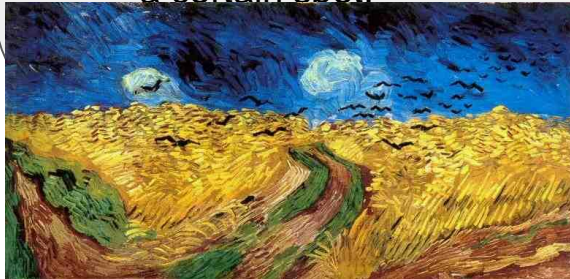


- The colors used are bright and a little dark. To create an idea of the style they want to use and are using,
- Realism is the main focus around many of their pieces. The artists wanted to capture what they were seeing or thinking so others can see it as well.
- Use of lines and shapes to show movement and the idea they are getting across. The idea they are getting across is how movement can make the piece tie together and flow.



Contrasting Artistic Styles

- Van Gogh uses more darker colors to create his meaning and show what emotions he had while he made the piece.
- Use of movement is well known in his works.
- Wants to create the idea of someone looking out a window at a certain spot.



- Dali use of color to create new and unknown pieces.
- Use of deformed/ odd objects to show his twist on artworks.
- Wants to have his own style and idea for his pieces.



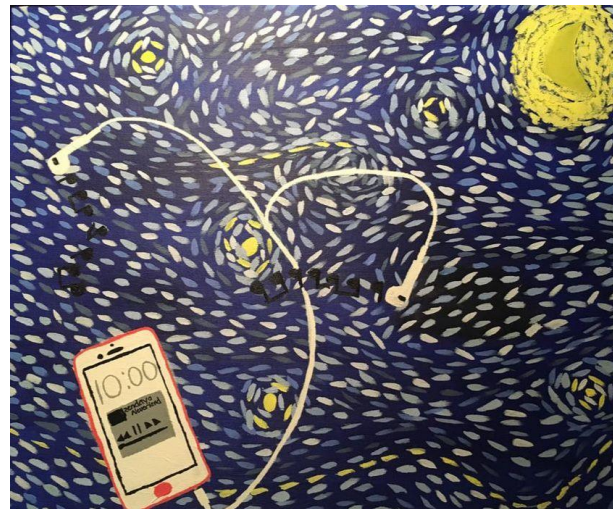
- Williams-Brusubardis uses bright colors.
- Use of circles filled with multiple colors to create her pieces.
- Blends colors to make a blur effect on other works.
- Use of both ideas to make her own unique pieces.



Analysis of Formal Qualities in Own Work

My inspiration and connection to my painting is Vincent Van Gogh's *Starry Night*. I wanted to focus on the way the sky flows and the way the sky creates movement like Van Gogh. I wanted to add my own twist to the piece and use something that means a lot to me and always helps me calm down. I used my phone instead of buildings or mountains to create a sky view. The way the sky flows makes the phone and headphones stand out. The piece is also bubbly like his was because of the way he clamped his paint and made it look like the sky was popping out.

I mainly focused on the colors and techniques he used to create his piece. I wanted to use the blues he had but also use blues that I created so there would be more color on the canvas. I also used his technique of using a thick but small paintbrush to make the clumps and movement of the piece. I used thicker brushstrokes to make the paint bubble more and the movement look real. I wanted to be able to create a piece that would draw people to it and make them want to come up and touch the piece. Overall I wanted to capture my meaning as well as Van Gogh's meaning into my piece.



Night Melody
Acrylic
20" x 24"
12/7/17

Analysis of Formal Qualities in Own Work

The painting to the right was inspired by Salvador Dali and how he used his main focal point as the meaning behind the piece. I used techniques Dali used in his works, but also added my own twist to it and make it more of my piece. In this piece I included a clock like Dali did in many of his works.

To create this piece I had many experiments to see which way I liked the piece and how I wanted the clock and moon placed. I mainly used dark colors because I wanted to show night time and how people can't stop time. I tried to make a galaxy background, but it wasn't turning out the way I wanted it to and it didn't work well with the colors I used.

I chose Dali to focus this piece on because he ties his work around dreams and usually dreams happen during time and no one can change the time to relive a dream. I used his idea of a clock but instead of deforming it and making it look bent, I left it the way it was and added the moon to represent night. I wanted to add Van Gogh as well, but I knew there was going to be too much going on in the piece, so I stuck to one artist but had my own ideas added to it. It was difficult for me to get this piece the way I wanted it. In the end I was able to get it the way I wanted.



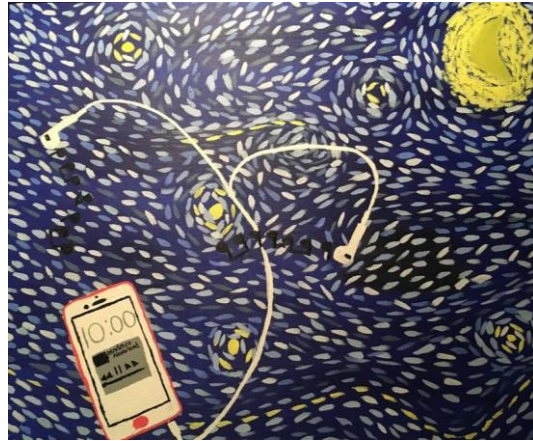
Connection of Own Art to Vincent Van Gogh

Similarities

- Color scheme, blues and yellows
- Focal point is in the same spot.
- Accent colors, yellows, whites
- Direction the paint flows, from left to right.

Differences

- Meanings behind the pieces
- He uses very small gentle strokes, I used small heavy swipes.
- Reasons for using the dark colors in the background.
- Blending



Connection of Own Art to Salvador Dali



Similarities

- Use of a clock
- Had the clock be the center point of the piece with other things happening.
- Technique, make everything besides what you focus on smaller.

Differences

- Meaning behind the pieces, his meaning was about dreams, mine is about time.
- Dali made his clock melt and fall apart, I had mine behind a moon.
- Colors, his- light and dark, mine -dark



Connection of Own Art to Williams-Bursubardis



Similarities

- Vibrant colors, pinks, blues, yellows
- Use of dark vs light colors, using dark as the background and light as the main.
- Use of the whole canvas, doesn't use a small part.

Differences

- Different techniques, she used circles, I used straight lines and circles.
- Color scheme, she used mainly bright vibrant colors, I had a mix of dark and light.
- Meanings, she based her one what she went through, I based my one society.

